



## SN110 ShowNet Node

### Dual Port Ethernet DMX Node

- Compact and Cost effective ShowNet DMX Node
- Two DMX In/Out ports
- Fast 40 Hz DMX update rate
- DMX ports may be custom configured with any 512 DMX addresses for complete system flexibility
- 10/100BT Ethernet Operation
- Integral LCD Display provides node and port labeling
- Adjustable Backlight levels for dark applications
- Designed for Surface or Recess Mounting
- Choice of power supplies with mains or low voltage versions available
- Supports IEEE802.3af power over Ethernet
- Dimmer status reporting link available on either port
- Nodes may be configured with Strand ShowNet software or Web Browser
- Each node may be configured using Strand's new iPaq wireless remote
- 32 Bit processor standard with Linux O/S
- Compatible with all ShowNet nodes and control systems
- Compatible with SLD Dimmer racks
- Removable faceplate may be painted to match installation finishes
- All Strand ShowNet nodes are ESTA A.C.N. ready



65110 SN110 ShowNet Node

### Mechanical Data

#### Construction

High Impact Injection molded fascia with steel subframe

#### Weight:

.86 Kg.—1.9 lbs.

#### Dimensions (HXWXD)

114mm X 114mm X 101mm  
4.5in. X 4.5in. X 4in.

### Environmental Data

#### Operating Temperature

0° to 40°C

#### Storage Temperature

-40° to 70°

#### Humidity

5% - 95% non-condensing





**SN110 ShowNet™ Node**

Compact and flexible the SN110 ShowNet DMX nodes provide cost effective network connectivity for facilities of all sizes. Each node features two DMX connectors that may dynamically be configured for input or output operation.

Based on a 32 bit ARM processor all SN110 nodes utilize the Linux operating systems for stable 10/100BT operation. Nodes may be configured with Strand's popular ShowNet software or with any Web Browser. Node status, Node ID, and DMX port identification are available on the integral LCD display. The display features adjustable back lighting.

All Strand ShowNet nodes feature advanced DMX patching permitting any range of 512 numbers to be selected for each DMX port. Priority patching with up to three levels of priority assignments available.

**Technical Specifications**  
**Supply Voltage**

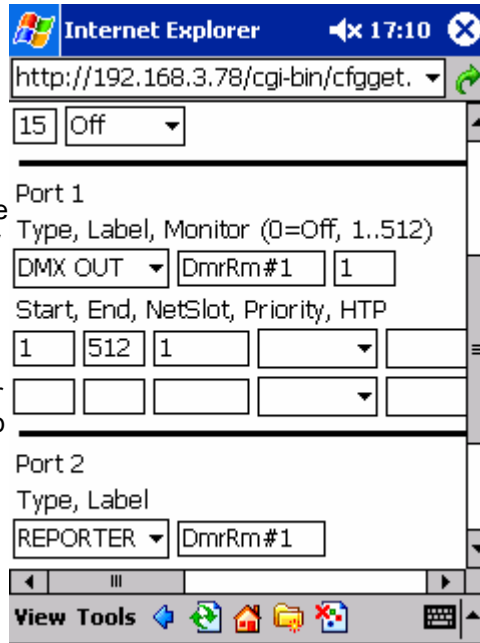
**24-48 VDC or Mains voltage 90-230 volts**

**Standards Compliance**

EMC emissions to EN50081-1, EN55014; EMC immunity to **EN50082-1**, IEC1000-2-2; Safety: EN60950, EN60439 Part 1 (also part 12 BS5486); design & build: ISO9000, UL1950. Ethernet IEEE  
The Node shall be CE UL & cUL listed.

**Connections**

Dimmers: DMX 512 (512 Dimmers) 5 pin female XLR (2)  
Ethernet: RJ45



This graphic illustrates how easy it is to route DMX using a simple point and click web browser interface and is the most powerful part of a ShowNet network. Over 18,000 DMX addresses are supported on all Strand Networks.

**Ordering information**

Cat No	Description
65110	SN110 Node No PSU
65111	SN110 Node 120/230V
65112	SN110 Node for Equipment Mounting
75785	SN110 Node for SLD racks



The Company reserves the right to make any variation in design or construction to the equipment described.

©Copyright Strand Lighting Ltd. 2001  
Strand™, Strand Lighting™, Strand Quartzcolor™, are the Trademarks of Strand Lighting Limited and Strand Lighting Inc.